



**LIGHT**

**LIGHT ELECTRONICS CO., LTD.**

---

## Electro-Optical Characteristics



参数名称		符号	数值	单位



## Electro-Optical Characteristics (Temperature=25°C)

参数名称	符号	条件	颜色	最小值	典型值	最大值	单位
							μ
	$\lambda$						
	$\Delta\lambda$						
	$\theta$						

以上

厂商

manufacturer.

LIG

**LIGHT ELECTRONICS CO., LTD.**

---

# LIGHT

**LIGHT ELECTRONICS CO., LTD.**



### Reliability Test Items And Conditions

## 实验项目

## 参考标准

## 实验条件

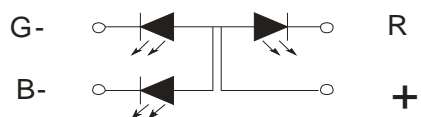
时间

 $\longleftrightarrow$

## Product design and operational recommendation

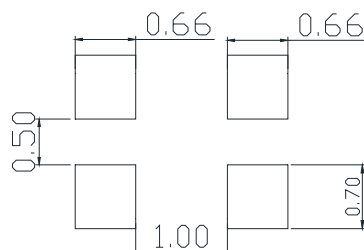
1 mm

Product design Unit: mm



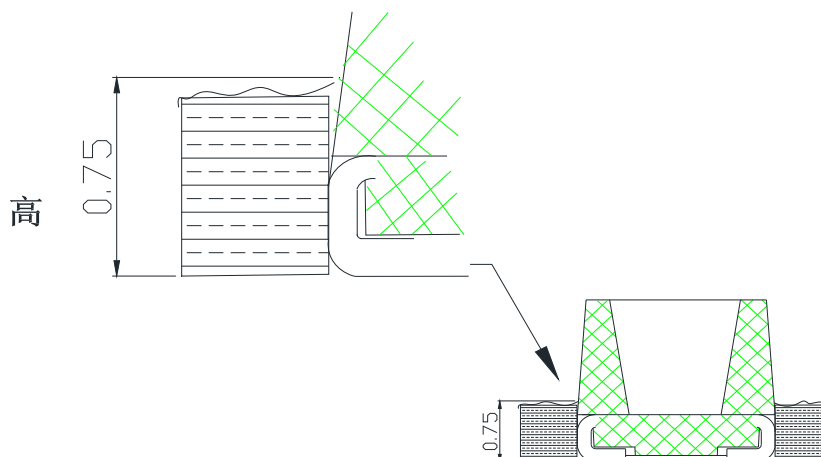
2 mm

Recommended soldering pad (Unit: mm)



3 0.75mm

Recommendation for glue filling: filling height must be higher than or equal to 0.75mm



**1**

### Packaging (1)

✧ Carrier Tape

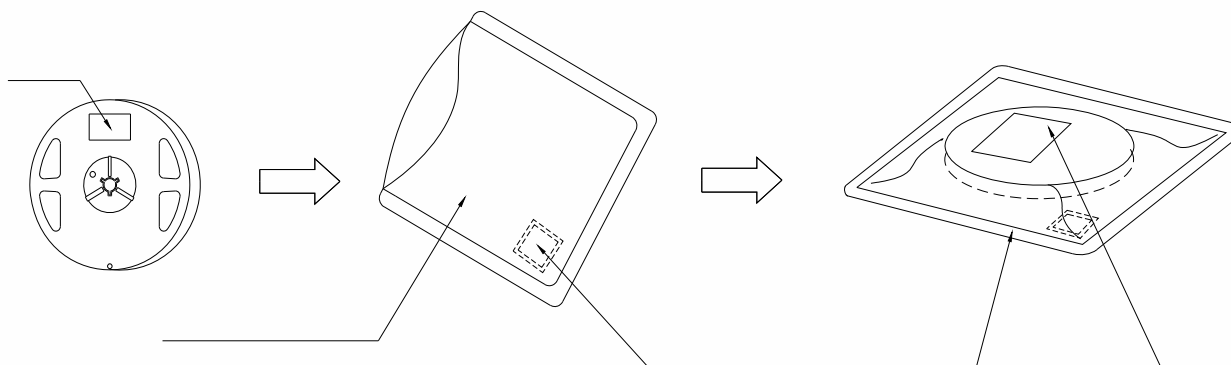
✧

2

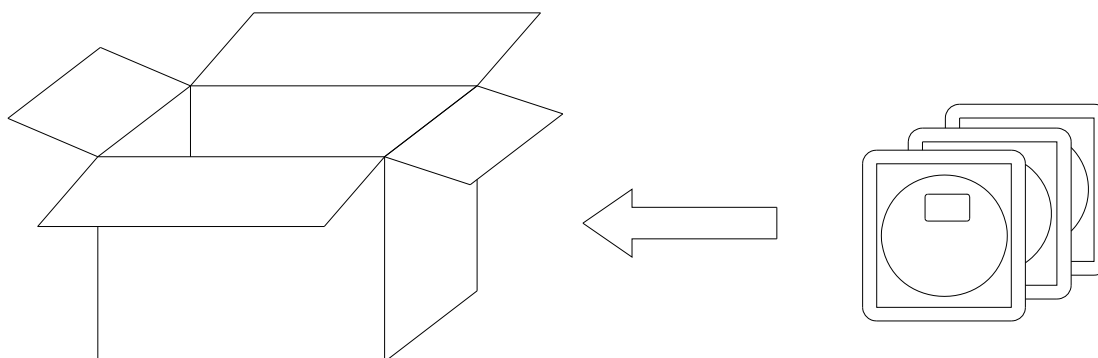
### Packaging( 2)





#### Moisture Proof and Anti-Electrostatic Foil Bag



#### Cardboard Box



#### Label Explanation

<b>LIGHT</b>		 Lot No.: 
Light Electronics CO., LTD.		
TYPE NO.:		
QUANTITY:		
BIN:		
DATE CODE:		
REMARKS:		




LIGHT

LIGHT ELECTRONICS CO., LTD.

## 2

## Guideline for Soldering (2)

(1)

### Precautions (1)

1.

#### Storage

- 
- 
- 
- 
- 

2.

#### Static Electricity

- 
- 
-

(2)

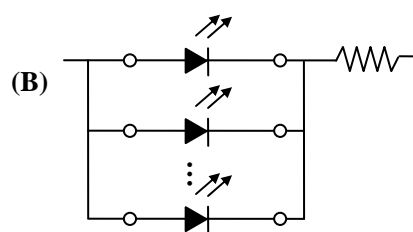
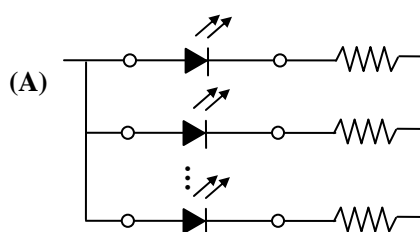
## Precautions (2)

3.

### Design Consideration

•

•



•

4.

### Reverse voltage protection

•

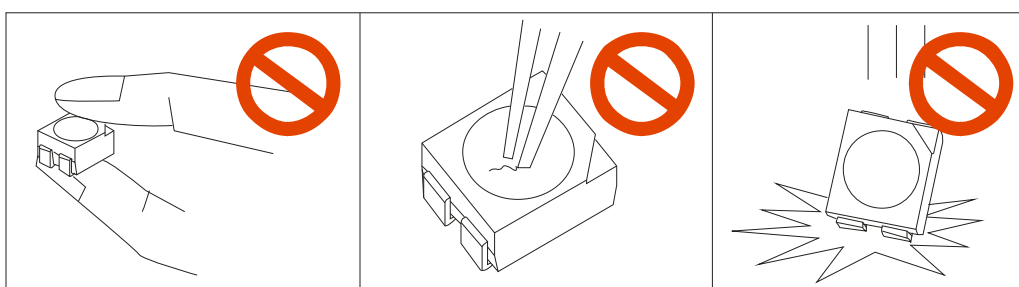
5.

The safe temperature for LEDs working

- 

6.

- 



-