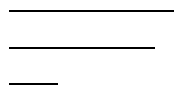


LG-T1921RGBA-TD-AL



LG-T1921RGBA-TD-AL

TOP Full-color LED

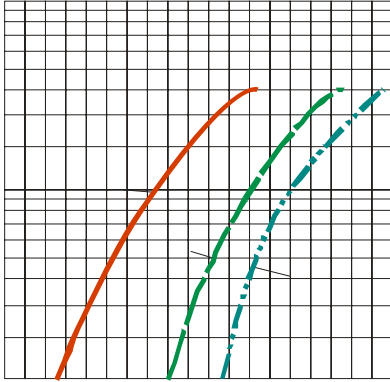
Catalogue

Electrical Characteristics.....3

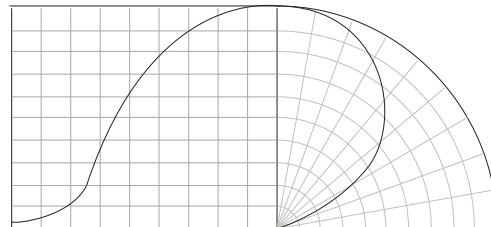
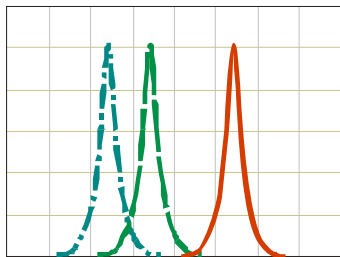
Typical Characteri0 Tm teri54.22 1.5 acteru5(irveTc 0 T3 0 T 20.449 34250713.73G-T191D)TJ £ 10.5 0 0 10.5 0

Typical Characteristics Curves

T_{Ambient} 25



T_{Ambient} 25



Reliability Test Items And Conditions

实验项目	参考标准	实验条件	时间	样品数	判据
		↔			

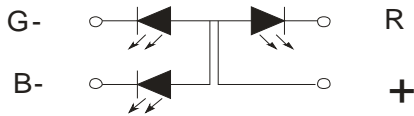
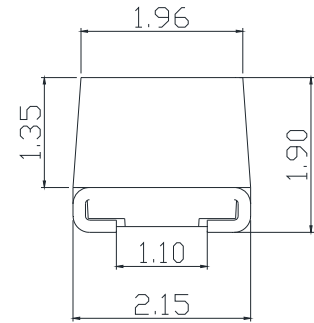
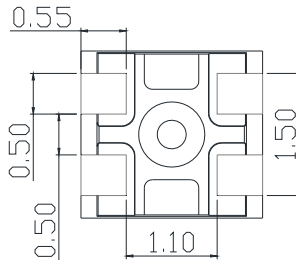
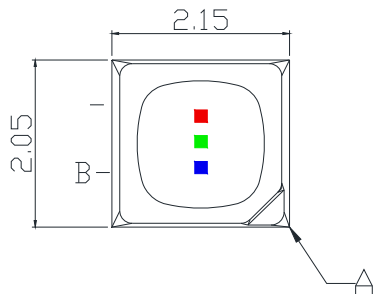
Criteria For Judging Damage

测试项目	符号	测试条件	判定标准
			μ
			≧ ≦

Product design and operational recommendation

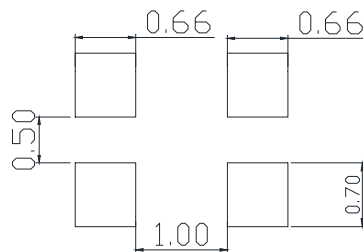
1 mm

Product design Unit: mm



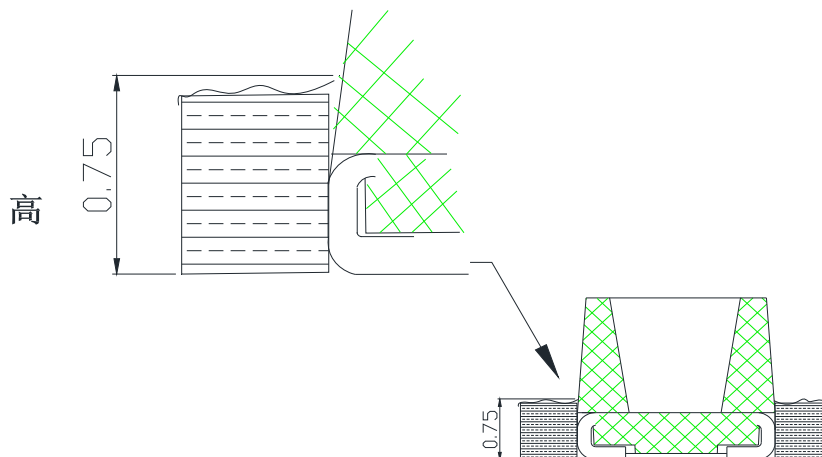
2 mm

Recommended soldering pad (Unit: mm)



3 0.75mm

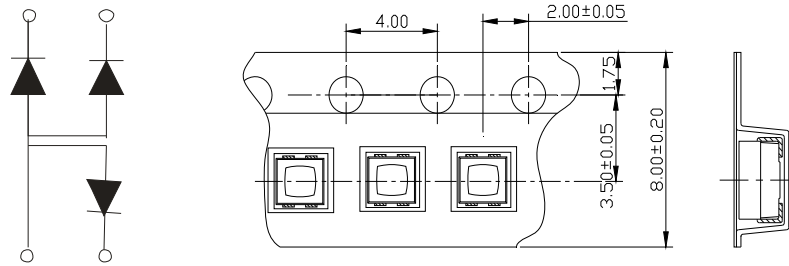
Recommendation for glue filling: filling height must be higher than or equal to 0.75mm



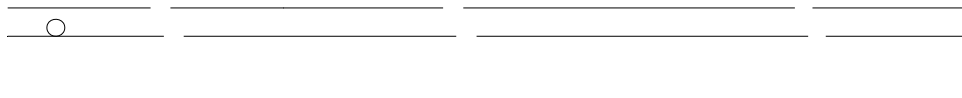
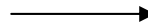
1

Packaging (1)

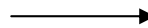
◇ Carrier Tape



◇ Details Of Carrier Tape

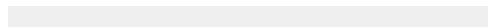


◇ Reel Dimension



LIGHT

GHT



Guideline for Soldering (2)

(2)

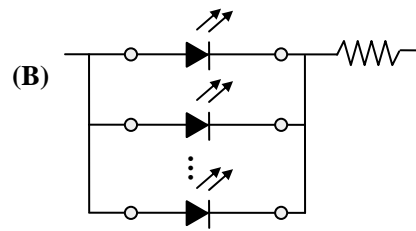
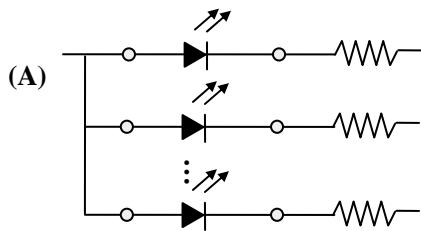
Precautions (2)

3.

Design Consideration

-

-



-

4.

Reverse voltage protection

-

