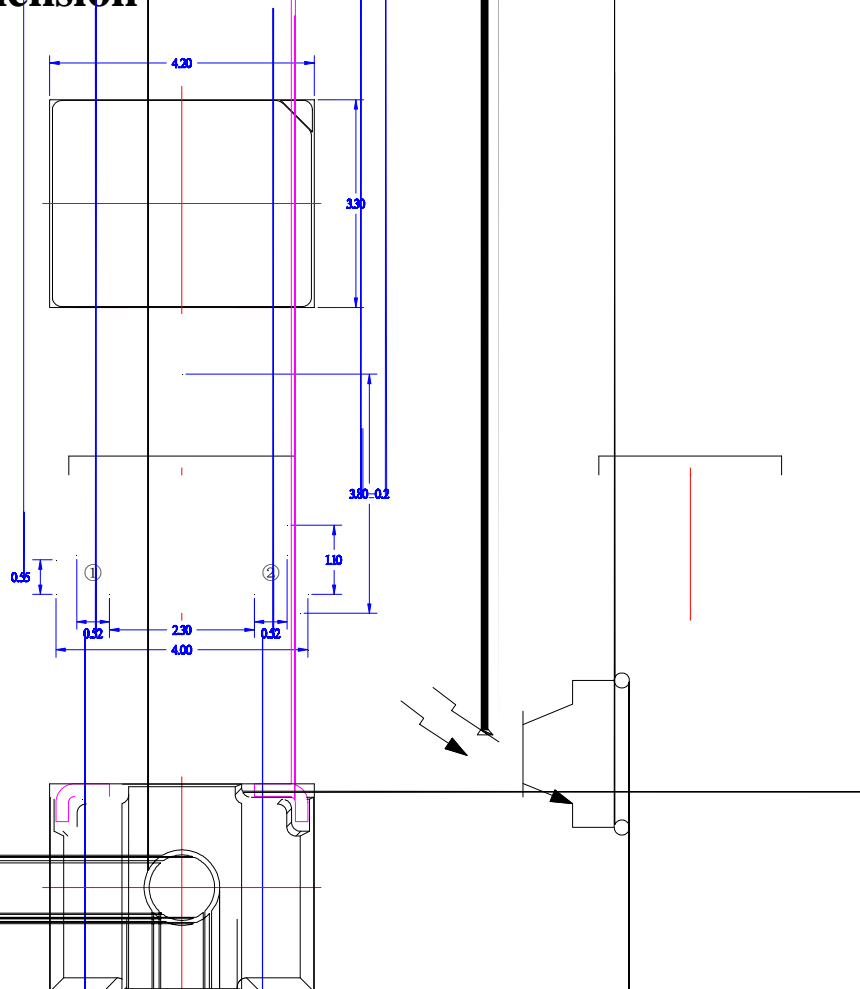


Features

- Pb free product—RoHS compliant
- High Photo Sensitivity
- Reliable and rugged
- Long life – solid state reliability
- Sensitivity angle: 35°

Package Dimension



| Part NO. | Chip Material | Lens Color |
|---------------------|---------------|------------|
| SL-T4232PTB020-L380 | Silicon | Black |

Notes:

1. All dimensions are in millimeters.
2. Tolerance is ± 0.10 mm unless otherwise noted.
3. Specifications are subject to change without notice.

Typical Electrical / Optical Characteristics Curves (25 Ambient Temperature Unless Otherwise Noted)

FIG.1 Relative Response vs. Wavelength

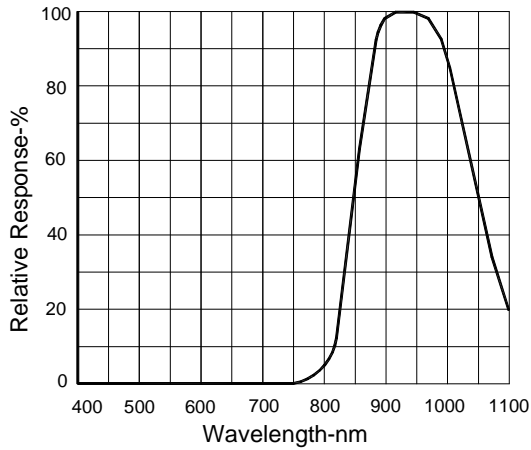


FIG.2 Power Dissipation Vs. Ambient Temperature

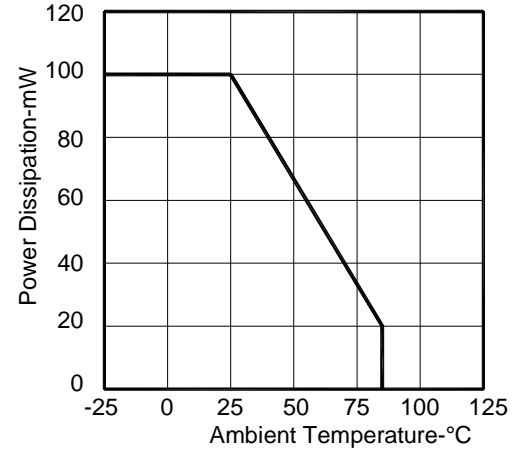


FIG.3 Rise And Fall Time Vs. Load Resistance

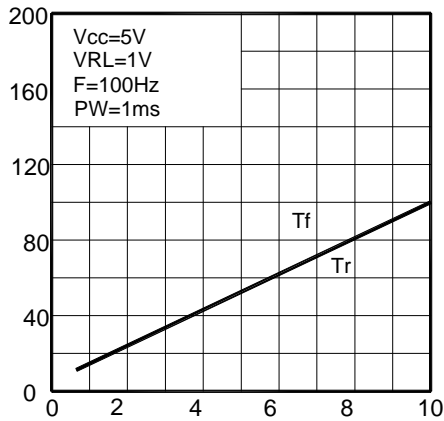


FIG.4 Relative Collector Current Vs. Irradiance

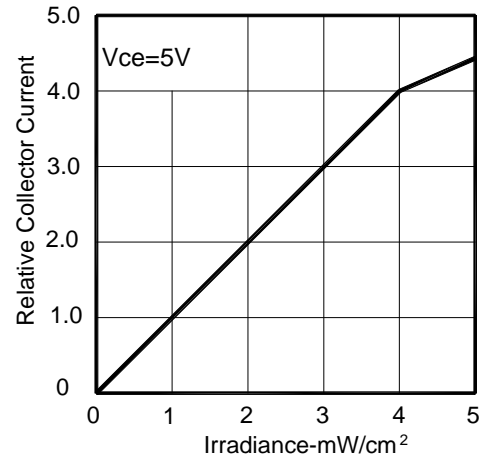


FIG.5 Collector Dark Current Vs. Ambient Temperature

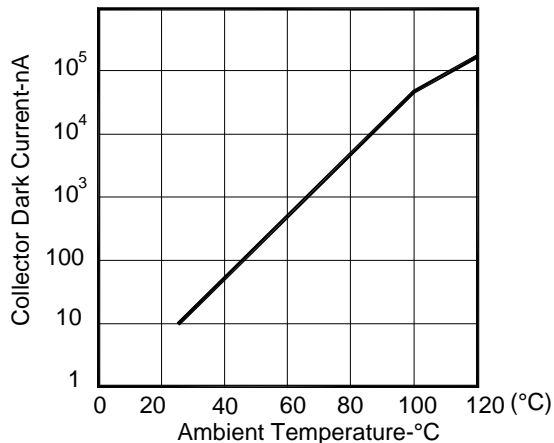
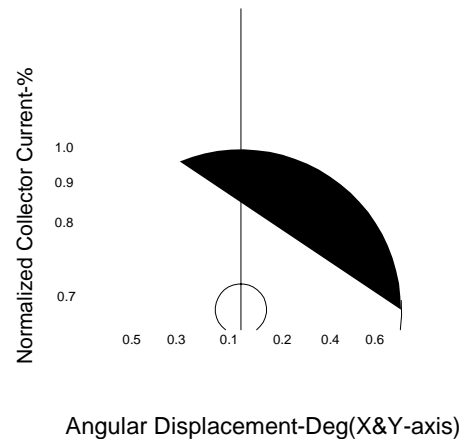


FIG.6 Light Current vs. Angular Displacement



Ic(on) Bin Code ($V_{CE}=5V$, $E_e=1mW/cm^2$, $p=940$)

| BIN CODE | Min.(A) | Max.(A) |
|----------|----------|----------|
| 65 | 9.2 | 11.0 |
| 66 | 11.0 | 13.0 |
| 67 | 13.0 | 15.5 |
| 68 | 15.5 | 18.5 |
| 69 | 18.5 | 22.0 |

NOTE: The Ic(on) guarantee should be added $\pm 15\%$ tolerance.



Label Explanation

LIGHT Universal Label

| | |
|-----------------------------|-----------------|
| LIGHT | |
| Light Electronics CO., LTD. | |
| MODEL NAME: _____ | LOT NO. : _____ |
| QUANTITY: _____ | |
| BIN _____ | |
| PACKING DATE: _____ | |
| REMARKS: _____ | |

Customer Defined Label

| | |
|-----------------------------|--|
| LIGHT | |
| Light Electronics CO., LTD. | |
| MODEL NAME: _____ | |
| QUANTITY: _____ | |
| BIN _____ | |
| PACKING DATE: _____ | |
| CUSTOMER T B | |

